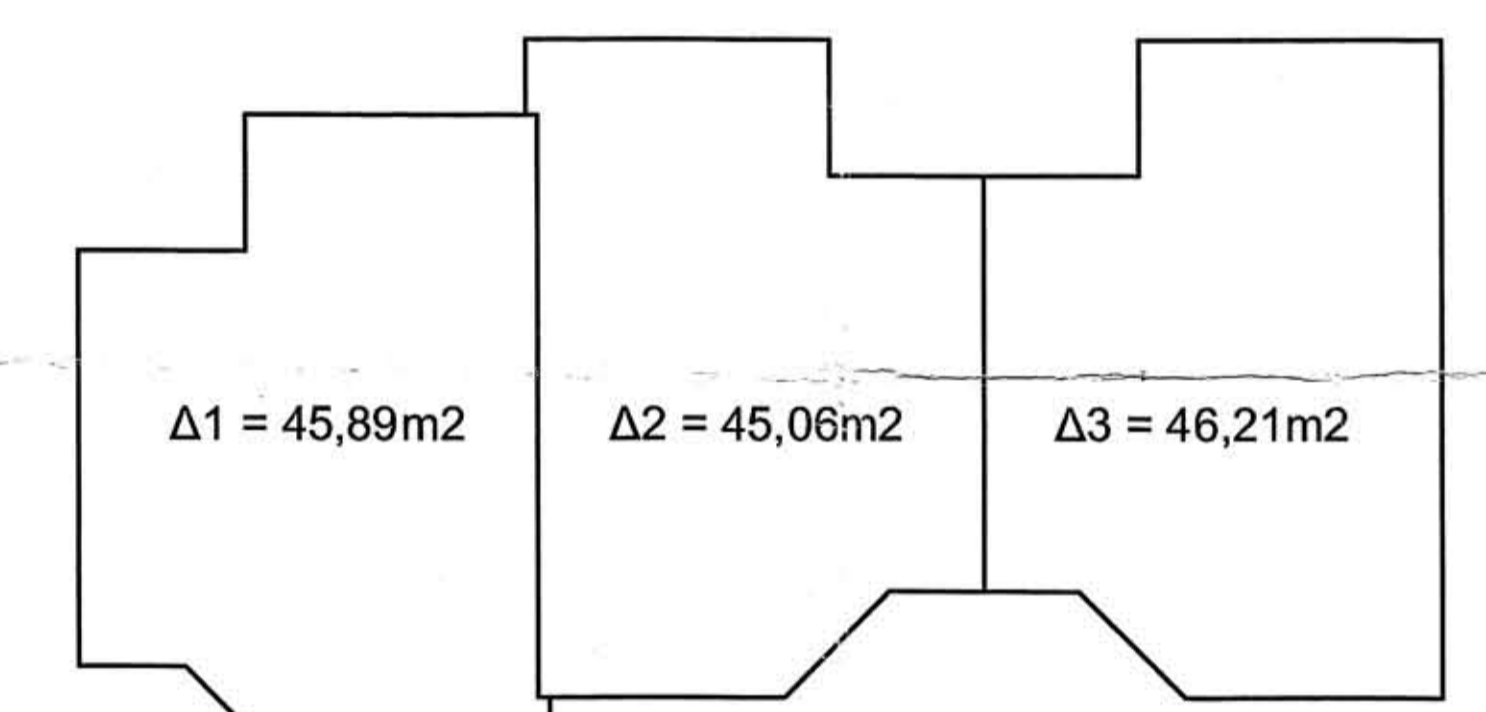
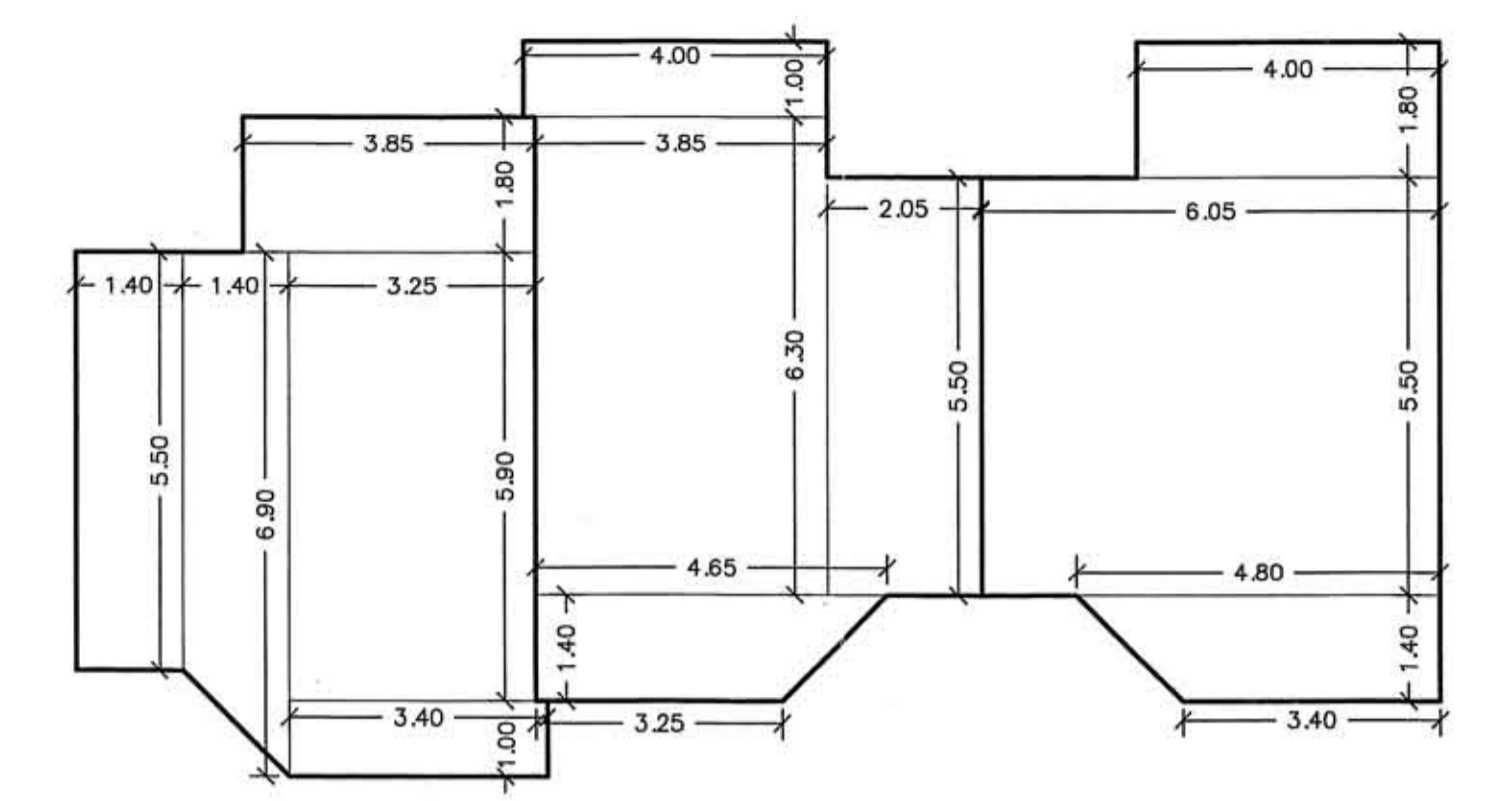


**ΚΑΤΟΨΗ ΙΣΟΓΕΙΟΥ**



$\Delta 1 = 45,89m^2$

$\Delta 2 = 45,06m^2$

$\Delta 3 = 46,21m^2$

137.16 ΣΥΜΜΟΝΟ 0 Δ'

$A_{\text{B}} = 87.113$

$A_{\text{B}} = 85.97$

$A_{\text{B}} = 88.27$

ΣΥΜΜΟΝΟ 261.67